

## MD080-2

# ■ Road-rail 8-t dump truck

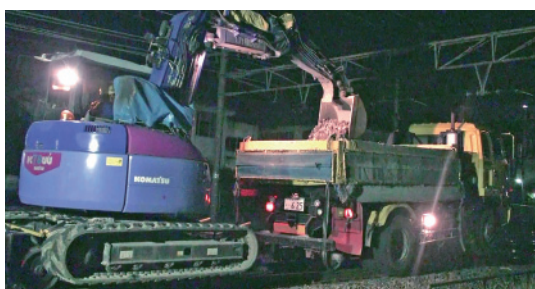


### Features The largest class road-rail dump truck

- The highest loading capacity among road-rail dump trucks.
- Provided with drop side gate body suitable for transportation and spreading of ballast.
- Provided with an emergency engine unit, which ensures running even in case of trouble with the main engine.
- Applicable to standard gauge (1,435 mm) and narrow gauge (1,067 mm)  
\* Changeable to other gauges.
- All models are provided with back monitors.



### ■ Examples of work





## Principal specifications

| Item                                     | MD080-2                                    |
|--|--|
| <b>Specifications</b>                    |  |
| Base vehicle                             | Isuzu Model KC-CVR80F2 W/B 3700 mm         |
| Body specifications                      | Square bottom three-side tipper truck      |
| Weight of vehicle (kg)                   | 10,230                                     |
| Max. loading capacity (kg)               | 5,000                                      |
| Total weight of vehicle (kg)             | 15,340                                     |
| Riding capacity (persons)                | 2  |
| Fuel tank (L)                            | 200  |
| <b>Dimensions</b>                        |  |
| Overall length (mm)                      | 7,040                                      |
| Overall width (mm)                       | 2,490                                      |
| Overall height (in normal state) (mm)    | 3,122                                      |
| Overall height (on track) (mm)           | 3,342                                      |
| Overall height (in elevated state) (mm)  | 4,200                                      |
| Wheel base (mm)                          | 3,730                                      |
| Tread (front) (mm)                       | 2,065                                      |
| Tread (rear) (mm)                        | 1,850                                      |
| Min. road clearance (mm)                 | 225  |
| Internal length of loading platform (mm) | 4,000                                      |
| Internal width of loading platform (mm)  | 2,240                                      |
| Internal height of loading platform (mm) | 400  |
| Loading height (mm)                      | 1,400                                      |
| Min. turning radius (mm)                 | 6,100                                      |
| <b>Track running performance</b>         |  |
| Max. speed (km/h)                        | 1st gear: 15 km/hr 2nd gear: 30 km/hr      |
| Max. gradient at which vehicle can start | 40/1,000                                   |
| Counterbalance braking distance (m)      | In fine weather: 18 m In wet weather: 25 m |
| Braking distance (m)                     | In fine weather: 10 m In wet weather: 14 m |

## Major units

| Item                                     | MD080-2   |
|--|---|
| <b>Engine</b>                            |   |
| Model                                    | Isuzu Model 8PEI-S  |
| Type                                     | 4-cycle water-cooled inline direct injection type   |
| Total displacement (cc)                  | 15,201  |
| Max. output (PS/rpm)                     | 285/2,300   |
| Max. torque (kg·m/rpm)                   | 102/1,400   |
| <b>Hydraulic unit</b>                    |   |
| Type and quantity of hydraulic pumps     | Triple gear pump  |
| Hydraulic pump discharge (L/min)         | 113.3×2+28.3  |
| Max. set pressure (kgf/cm <sup>2</sup> ) | 210   |
| Hydraulic oil tank capacity (L)          | 200   |
| Operation method                         | Solenoid valve  |
| <b>Track running equipment</b>           |   |
| Wheel                                    | Diameter: 460mm Width: 125mm, wheel back to back gauge: 990mm (narrow gauge), 1,360mm (standard gauge), 4 insulated wheels  |
| Axle                                     | 2 axles (diameter 100 mm)<br>Distance between axles: 3,550mm  |
| Motive power source                      | Hydraulic motor with counterbalance valve (output 97 kW, torque 1,530 N.m)  |
| Drive                                    | Rear axle chain drive system  |
| Brake                                    | Hydraulic disc brake for each axle (braking torque: 0.5 t.m) + counterbalance valve for each axle, with parking braking system and escape lash prevention device                      |
| <b>Safety devices in track</b>           |   |
| Emergency engine                         | Air-cooled 4-cycle single cylinder diesel engine (406 cc, 10 ps)  |
| Other safety devices                     | Driving force release clutch, hydraulic motor free valve, Brake release valve, Dump truck height limit, front and rear lamps, flasher, connecting hole, coupling rod and back monitor |

## Major dimensions

